

Sweet Peaks

386.003

© 2013 Art Form Architecture, Inc. All Rights Reserved . <http://www.artformhomeplans.com>



Sweet Peaks in another in our ever evolving Sweet Bungalow group. Design changes were to reduce framing cost and add a fourth bedroom.



See more plans in the [Sweet Cottages & Bungalows](#) Collection.

	Living Area	Bedrooms	Bathrooms	Ceiling Height Shown	Ceiling Height Possible*
First Floor	853 SF	0	0.5	8'-0"	8'-0"
Second Floor	1318 SF	4	2.0	8'-0"	8'-0"
Total Above Grade	2171 SF	4	2.5		
Basement	0 SF	0	0.0		

* -- Increasing ceiling height requires a Major Change.

<http://www.artformhomeplans.com/Contact.a5w>

<http://www.artformhomeplans.com/TermsConditions.a5w>

Sweet Peaks

386.003

© 2013 Art Form Architecture, Inc. All Rights Reserved . <http://www.artformhomeplans.com>

First Floor

Living Area: 853 SF

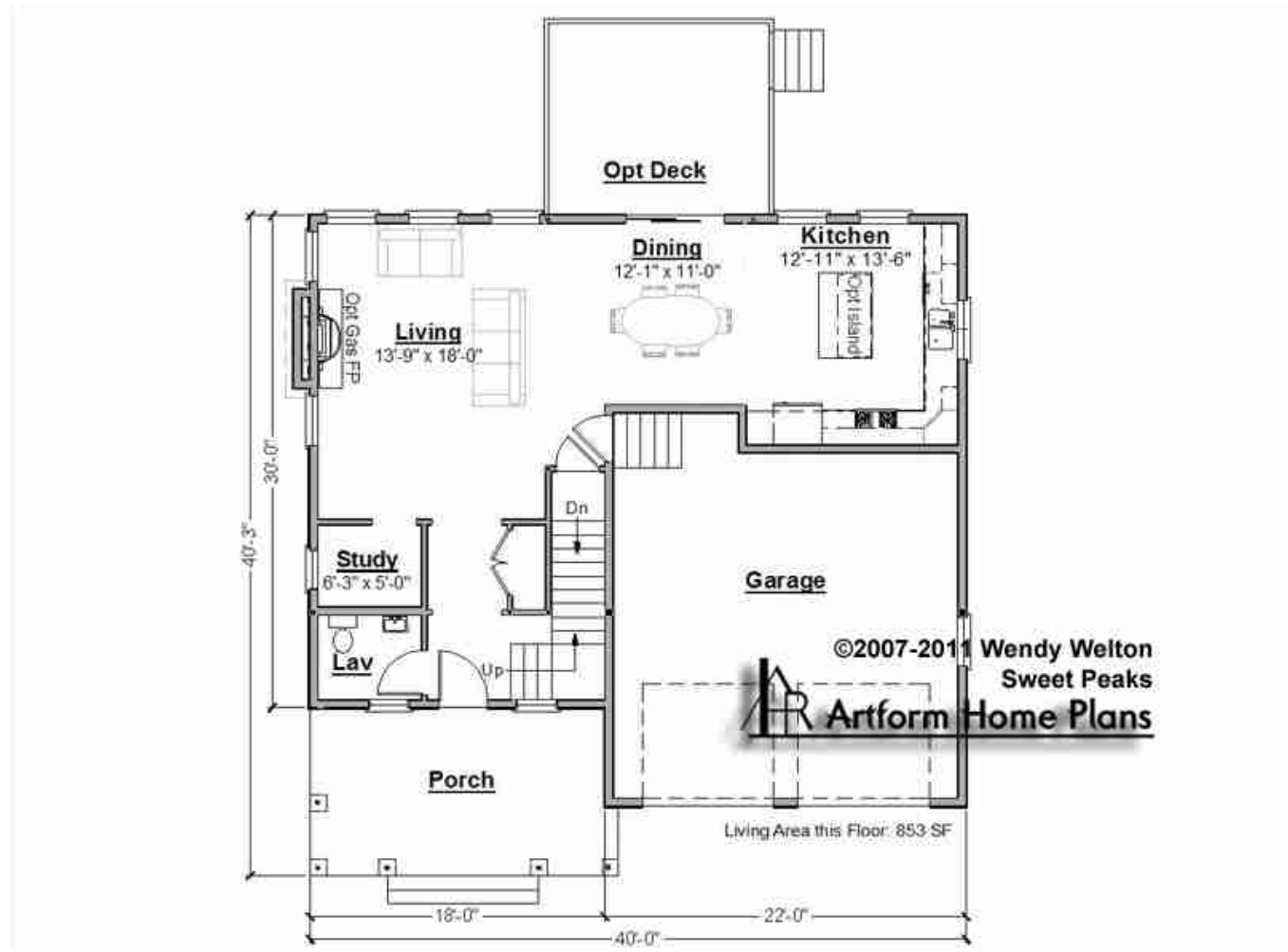
Bedrooms: 0

Bathrooms: 0.5

Ceiling Height Shown: 8'-0"

Ceiling Height Possible*: 8'-0"

* -- Increasing ceiling height requires a Major Change.



Sweet Peaks

386.003

© 2013 Art Form Architecture, Inc. All Rights Reserved . <http://www.artformhomeplans.com>

Second Floor

Living Area: 1318 SF

Bedrooms: 4

Bathrooms: 2.0

Ceiling Height Shown: 8'-0"

Ceiling Height Possible*: 8'-0"

* -- Increasing ceiling height requires a Major Change.



©2007-2011 Wendy Welton
Sweet Peaks

Living Area this Floor: 1318 SF

Sweet Peaks

386.003

© 2013 Art Form Architecture, Inc. All Rights Reserved . <http://www.artformhomeplans.com>



Basement Floor

Living Area: 0 SF

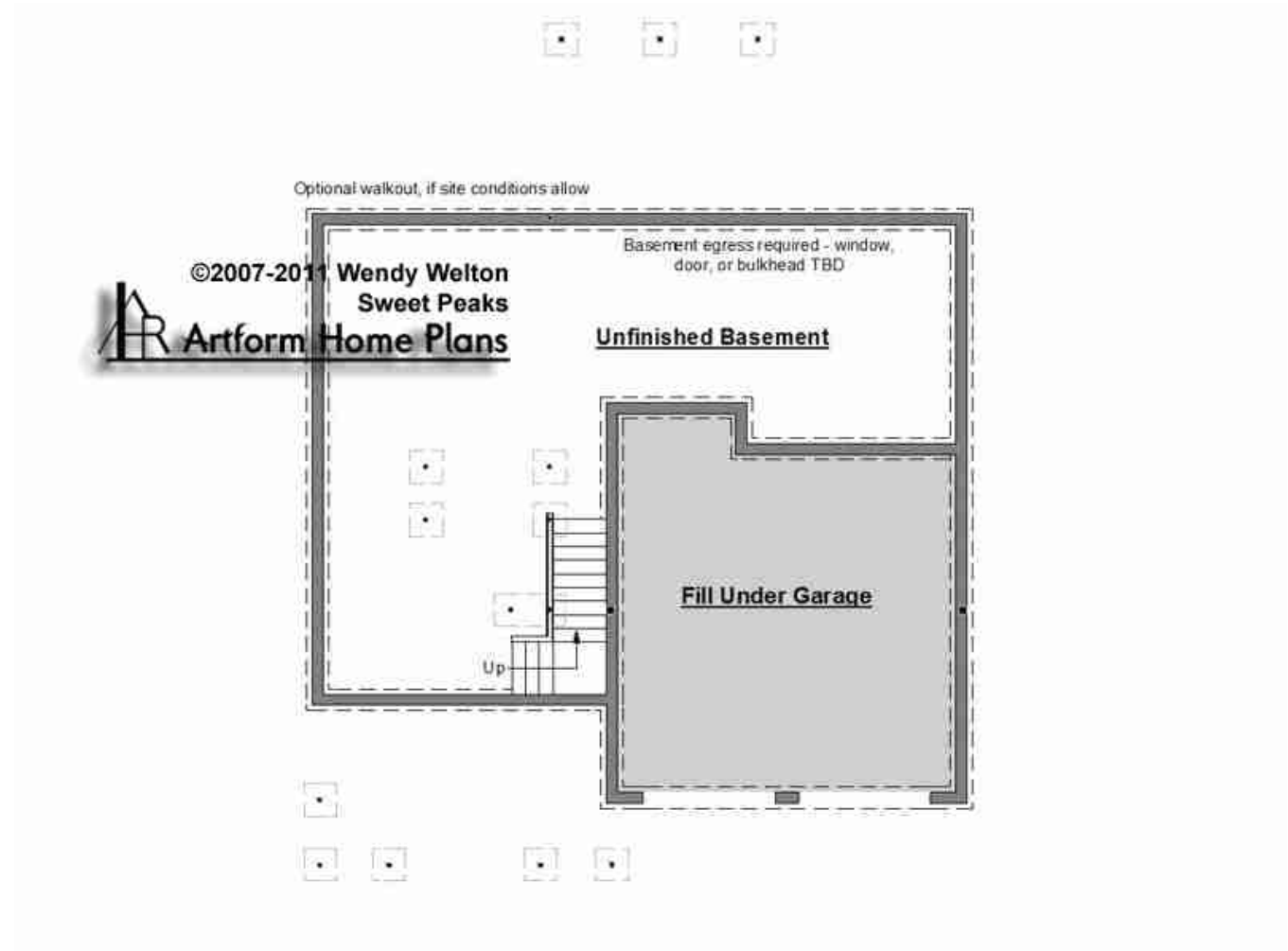
Bedrooms: 0

Bathrooms: 0.0

Ceiling Height Shown: 7'-8"

Ceiling Height Possible*: 9'-0"

* -- Increasing ceiling height requires a Major Change.



Sweet Peaks

386.003

© 2013 Art Form Architecture, Inc. All Rights Reserved . <http://www.artformhomeplans.com>

Elevations

